

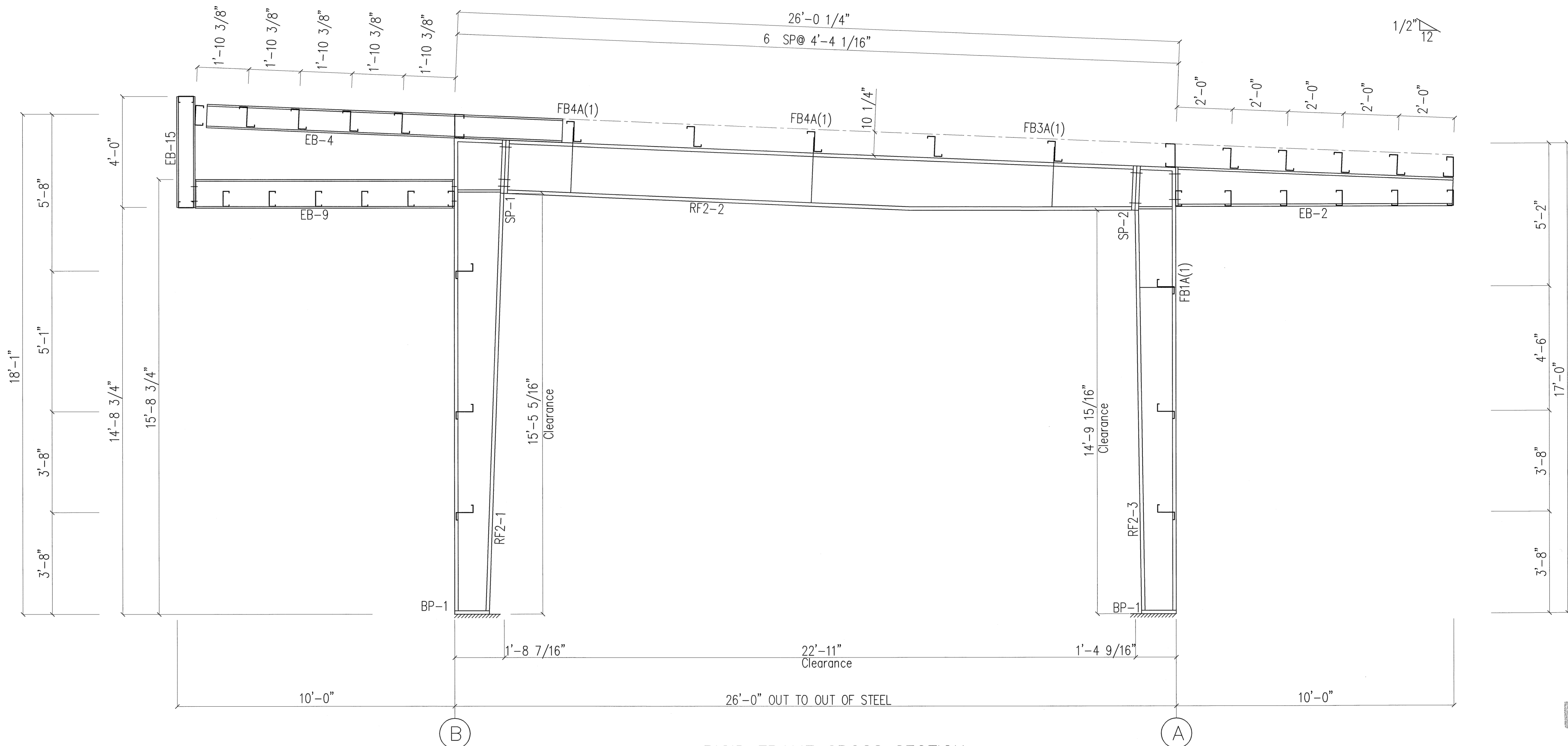
SPLICE PLATES & BOLTS									
Splice Mark	Quan	Top/Bot	Int	Type	Dia	Len	Plate Size		
							Wid	Thick	Length
SP- 1	4	4	0	A325	0.750	2.25	6"	5/8"	1'-9 1/2"
SP- 2	2	2	0	A325	0.750	2.00	6"	1/2"	1'-5 1/2"

STIFFENER TABLE				
Piece	Stiff Mark	Wid	Thick	Length
RF2-1	St- 1	2.910	0.250	11.76
RF2-3	St- 1	2.910	0.250	7.745

BASE PLATES			
Col Id	Plate Size		
	Wid	Thick	Length
BP- 1	8"	1/2"	1'-1"

PIECE	MEMBER SIZE TABLE (in)				
	WEB DEPTH	WEB PLATE		OUTSIDE FLANGE	INSIDE FLANGE
		START/END	THICK		
RF2-1	12.0/20.0	0.134	183.9	6x1/4" x206.0	6x1/4" x184.0
RF2-2	20.0/20.8	0.134	22.1	6x1/4" x 21.1	
	20.0/20.0	0.188	175.8	6x1/4" x273.3	6x1/4" x175.8
RF2-3	20.0/16.0	0.134	97.5		6x1/4" x 97.6
	16.0/12.0	0.134	193.6	6x1/4" x 15.6	6x1/4" x176.4

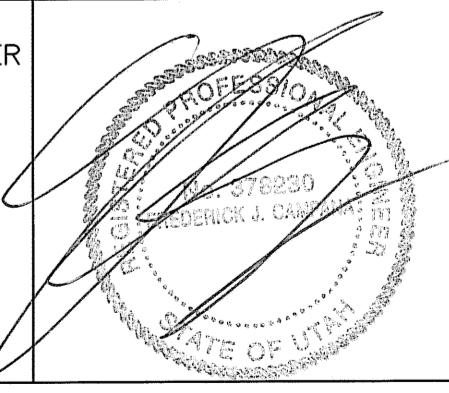
FLANGE BRACES: Both Sides(U.N.)  
 FBxxA(1)  
 A - L2x2x14



RIGID FRAME CROSS SECTION  
 FOR FRAME LINE 2

FOR PERMIT  
 JUN 10 2008

SEALING OF THIS DRAWING DOES NOT IMPLY OR CONSTITUTE THAT RIGID BUILDINGS ENGINEER IS THE ENGINEER OF RECORD OR THE DESIGN PROFESSIONAL FOR THIS PROJECT. ONLY THE DESIGN OF THE METAL BUILDING SYSTEM AS FURNISHED BY RIGID IS INCLUDED. FOUNDATION ANALYSIS, ELECTRICAL, AND MECHANICAL SYSTEMS, AND/OR OTHER PARTS SUPPLIED BY ANYONE OTHER THAN RIGID ARE SPECIFICALLY EXCLUDED. NO INSPECTION OR SUPERVISION IS IMPLIED.



ISSUE	REV. DESCRIPTION	DATE	DRN. DES.
A	CONFIRMATION	05.20.08	FFF LDD

**RIGID**  
 BUILDING SYSTEMS  
 18933 Aldine Westfield  
 Houston, Tx. 77073  
 Phone : (281) 443-9065  
 Fax : (281) 443-9064

DESCRIPTION	FRAME CROSS SECTION		
CUSTOMER	ELEGANTE ENTERPRISES, INC.		
END USER	PAINTERS SERVICE CENTER		
END USE	OFFICE/SERVICE BAYS		
LOCATION	1600 HILTON DR. ST. GEORGE, UT 84770		
DRN. BY: FFF	DATE: 05/20/08	CHK. BY:	DATE:
JOB NO.: 28268-D	SCALE: N.T.S.	DWG. NO.: E10 OF	ISSUE: A