

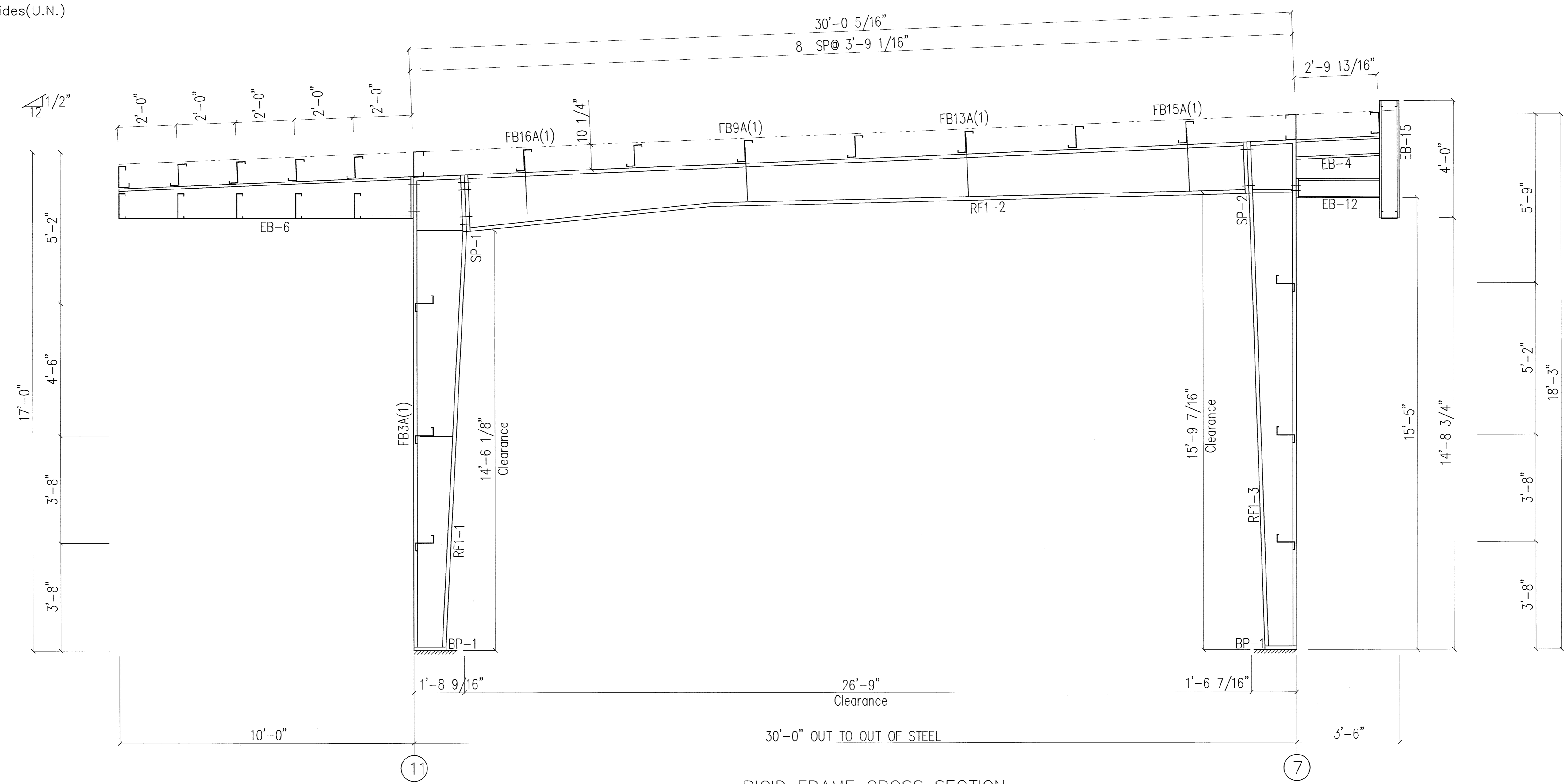
SPLICE PLATES & BOLTS									
Splice Mark	Quan	Top/Bot/Int	Type	Dia	Len	Plate Size			
						Wid	Thick	Length	
SP-1	4	4	0	A325	0.750	2.25	6"	5/8"	1'-9 1/2"
SP-2	2	4	0	A325	0.750	2.00	6"	1/2"	1'-7 1/2"

STIFFENER TABLE				
Piece	Stiff Mark	Wid	Thick	Length
RF2-1	St-1	2.410	0.313	11.74
RF2-3	St-1	2.410	0.313	9.755

BASE PLATES			
Col Id	Wid	Thick	Length
BP-1	8" 1/2"	1"-1"	

PIECE	MEMBER SIZE TABLE (in)		OUTSIDE FLANGE W x T x LEN	INSIDE FLANGE W x T x LEN
	WEB DEPTH START/END	WEB PLATE THICK LENGTH		
RF1-1	12.0/20.0	0.134 193.8	5x1/4" x193.0 6x1/4" x 19.4	5x1/4" x172.7
RF1-2	20.0/14.0 14.0/18.0	0.188 98.7 0.134 220.9	5x1/4" x319.6	5x1/4" x 98.8 5x1/4" x221.0
RF1-3	18.8/18.0 18.0/12.0	0.134 20.0 0.134 188.0	6x1/4" x 19.0 5x1/4" x208.0	5x1/4" x188.0

FLANGE BRACES: Both Sides(U.N.)
 FBxxA(1)
 A - L2x2x14

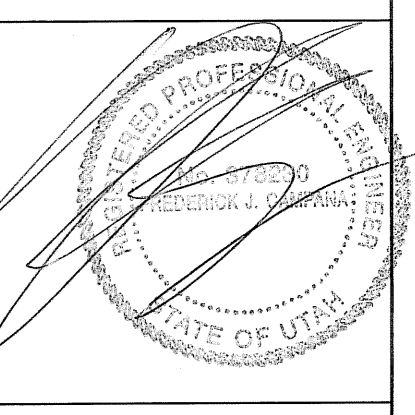


RIGID FRAME CROSS SECTION
 FOR FRAME LINE I J

FOR PERMIT

JUN 10 2008

SEALING OF THIS DRAWING DOES NOT IMPLY OR CONSTITUTE THAT RIGID BUILDINGS ENGINEER IS THE ENGINEER OF RECORD OR THE DESIGN PROFESSIONAL FOR THIS PROJECT. ONLY THE DESIGN OF THE METAL BUILDING SYSTEM AS FURNISHED BY RIGID IS INCLUDED. FOUNDATION ANALYSIS, ELECTRICAL, AND MECHANICAL SYSTEMS, AND/OR OTHER PARTS SUPPLIED BY ANYONE OTHER THAN RIGID ARE SPECIFICALLY EXCLUDED. NO INSPECTION OR SUPERVISION IS IMPLIED.



ISSUE	REV. DESCRIPTION	DATE	DRN. DES.
A	CONFIRMATION	05.20.08	FFF



DESCRIPTION	FRAME CROSS SECTION
CUSTOMER	ELEGANTE ENTERPRISES, INC.
END USER	PAINTERS SERVICE CENTER
END USE	OFFICE/SERVICE BAYS
LOCATION	1600 HILTON DR. ST. GEORGE, UT 84770
DRN. BY:	FFF
DATE:	05/20/08
CHK. BY:	
JOB NO.:	28268-C
SCALE:	N.T.S.
DWG. NO.:	E7 OF
ISSUE:	A