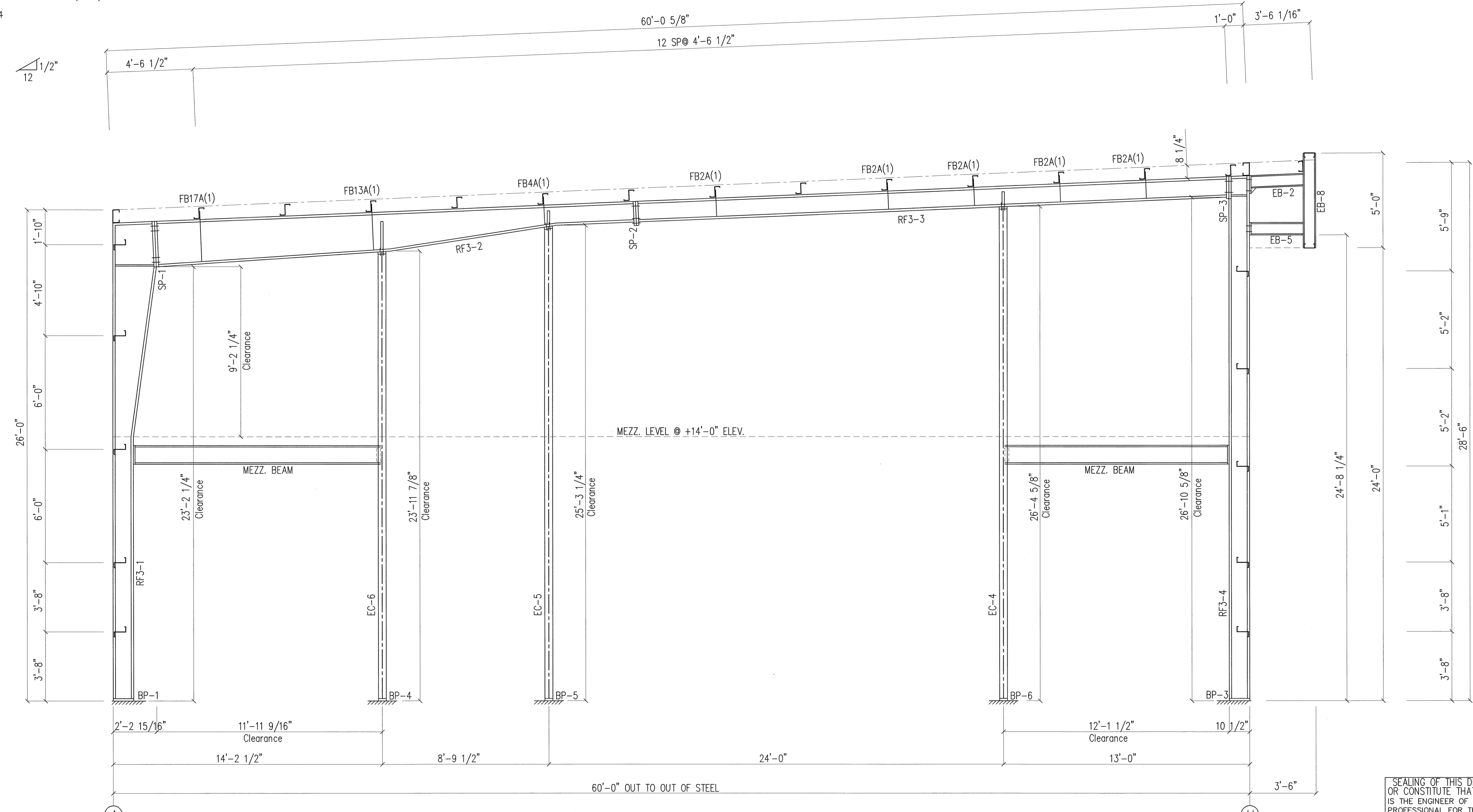


SPLICE PLATES & BOLTS						CAP PLATE BOLTS								
Splice Mark	Quan	Top/Bot/Int	Type	Dia	Len	Col Id	Qnt	Typ	Dia	Len				
SP-1	4	4	0	A325	1.000	2.75	8"	3/4"	2'-3 5/8"	EC-6	4	A325	0.625	1.75
SP-2	2	4	0	A325	0.625	1.75	6"	3/8"	1'-1 5/8"	EC-5	4	A325	0.625	1.50
SP-3	2	2	0	A325	0.625	1.75	6"	3/8"	11 1/2"	EC-4	4	A325	0.625	1.50

PIECE	MEMBER SIZE TABLE (in)		OUTSIDE FLANGE	INSIDE FLANGE
	WEB DEPTH START/END	WEB PLATE THICK LENGTH		
RF3-1	10.0/10.0	0.188 167.5	8x3/8" x302.9	8x1/2" x167.5
RF3-2	10.0/26.0	0.188 136.4	8x3/8" x 25.3	8x1/2" x110.3
	26.0/22.0	0.188 154.9	6x1/4" x304.2	6x1/4" x155.0
RF3-3	10.0/10.0	0.134 106.1	5x1/4" x377.8	6x1/4" x106.8
	10.0/10.0	0.134 43.2		
RF3-4	10.0/10.0	0.134 240.0	6x1/4" x 10.2	5x1/4" x321.2
	10.0/10.0	0.134 137.8		
EC-6	10.0/10.0	0.134 240.0	5x1/4" x332.9	
EC-5	10.0/10.0	0.134 92.9		
EC-4	W8x10			
	W10x12			
	W12x14			

STIFFENER TABLE				BASE PLATES			
Piece	Stiff Mark	Wid	Plate Size Thick Length	Col Id	Wid	Plate Size Thick Length	
RF3-1	St-1	3.910	0.313 25.99	BP-1	8"	1 1/2"	11 1/2"
RF3-2	St-2	2.910	0.313 22.33	BP-2	8"	1 1/2"	11"
RF3-3	St-3	2.910	0.313 11.37	BP-3	8"	1 1/2"	11"
RF3-4	St-2	2.410	0.313 10.01	BP-4	8"	1 1/2"	8"
RF3-4	St-1	2.410	0.313 10.00	BP-5	8"	1 1/2"	10"
				BP-6	8"	1 1/2"	1'-0"

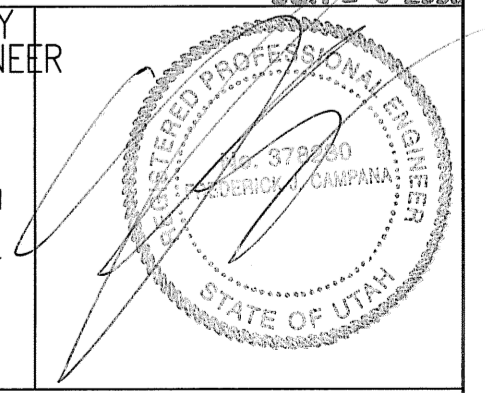
FLANGE BRACES: Both Sides(U.N.)
 FBxxA(1)
 A - L2x2x14



RIGID FRAME CROSS SECTION
 FOR FRAME LINE 12

FOR PERMIT

SEALING OF THIS DRAWING DOES NOT IMPLY OR CONSTITUTE THAT RIGID BUILDINGS ENGINEER IS THE ENGINEER OF RECORD OR THE DESIGN PROFESSIONAL FOR THIS PROJECT. ONLY THE DESIGN OF THE METAL BUILDING SYSTEM AS FURNISHED BY RIGID IS INCLUDED. FOUNDATION ANALYSIS, ELECTRICAL, AND MECHANICAL SYSTEMS, AND/OR OTHER PARTS SUPPLIED BY ANYONE OTHER THAN RIGID ARE SPECIFICALLY EXCLUDED. NO INSPECTION OR SUPERVISION IS IMPLIED.



ISSUE	REV.	DESCRIPTION	DATE	DRN.	DES.
A		CONFIRMATION	05.20.08	FFF	LDD

RIGID BUILDINGS SYSTEMS
 18933 Aldine Westfield
 Houston, Tx. 77073
 Phone : (281) 443-9065
 Fax : (281) 443-9064

DESCRIPTION	FRAME CROSS SECTION
CUSTOMER	ELEGANTE ENTERPRISES, INC.
END USER	PAINTERS SERVICE CENTER
END USE	OFFICE/SERVICE BAYS
LOCATION	1600 HILTON DR. ST. GEORGE, UT 84770
DRN. BY:	FFF
DATE:	05/20/08
CHK. BY:	
JOB NO.:	28268-A
SCALE:	N.T.S.
DWG. NO.:	E14 OF
ISSUE:	A